

Office – Respite Resident



Click on the Office icon

All Units

In residence

Joan Baxter

Joan Baxter

Sharon French

Christine Margaret

Peter White

Choose the **Appropriate Service User** from the list.



Select the **Edit** icon.

Respite:

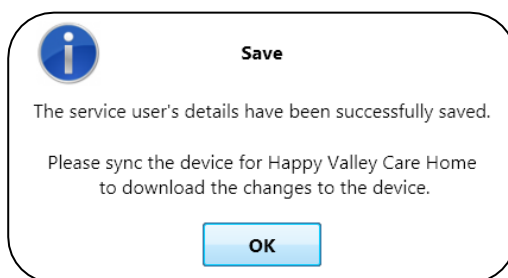
☒

* Respite resident medication will carry forward at the end of the cycle and automatically be checked in.

Tick the **Respite** box.



Select the **Save** icon to store any changes.



Once stored, the **Save** window will appear. Sync the device then select **OK**.



“Respite” will now appear on the **Resident's Profile**.

8) 13 June 2019 to 10 July 2019

Aspirin 75mg tabs	Canesten 1% cream	COM 4 Caplets	Furosemide 20mg tabs	Ibuprofen 200mg tabs	Warfarin 1mg tabs
-------------------	-------------------	---------------	----------------------	----------------------	-------------------

Respite resident medication will carry forward at the end of the **Cycle**.