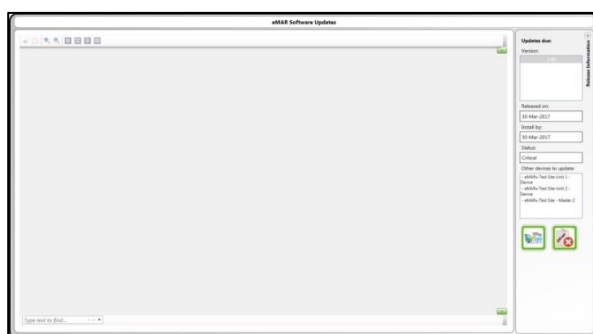


Auto Upgrade

Software updates are controlled by the Care Home.



If an update is available, a message will appear when logging in to the Office application.



By selecting yes, the 'Software Updates' window will now display on screen.

Here you will find information regarding the release notes for the update as well as the level of urgency.

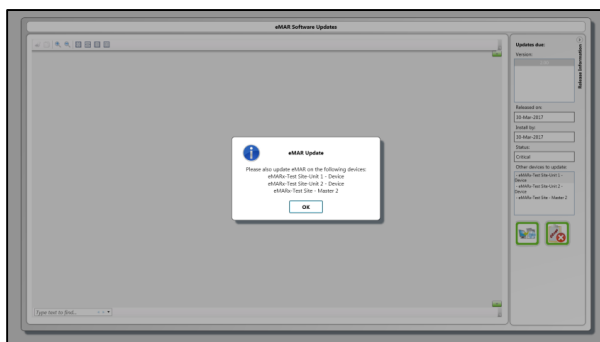
- Minor – 28 days to update.
- Major – 7 days to update.
- Critical – 1 day to install.

All release levels have a 7-day grace period. There after the device(s) will not be able to sync until the update has been completed.



Click the red "cancel" button to abort the update.

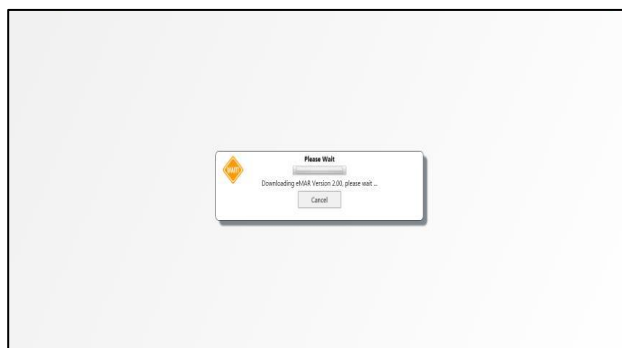
Click the green "Run" button to continue the update.



A box will appear listing the other applications that will need updating.



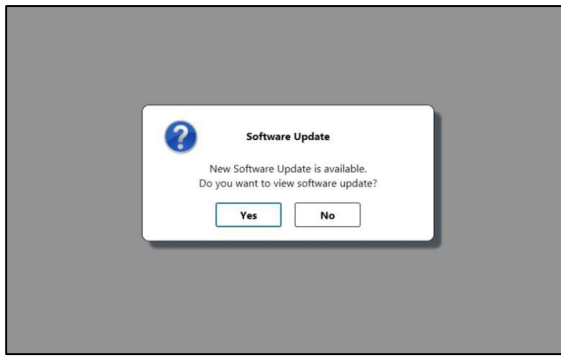
Depending on if the logged in user has admin permissions this window will appear. THIS IS YOUR WINDOWS LOG IN and not your eMAR log in.



The next screen will display the progress of the installation, depending on internet speeds this should only take a couple of minutes.



Check that the version has updated.



Once the office application is on the latest version It will try to update the device when a sync is performed.

Select the run update icon. This will run the installer then launch the login screen. Type in your credentials then sync again to complete update on the device.